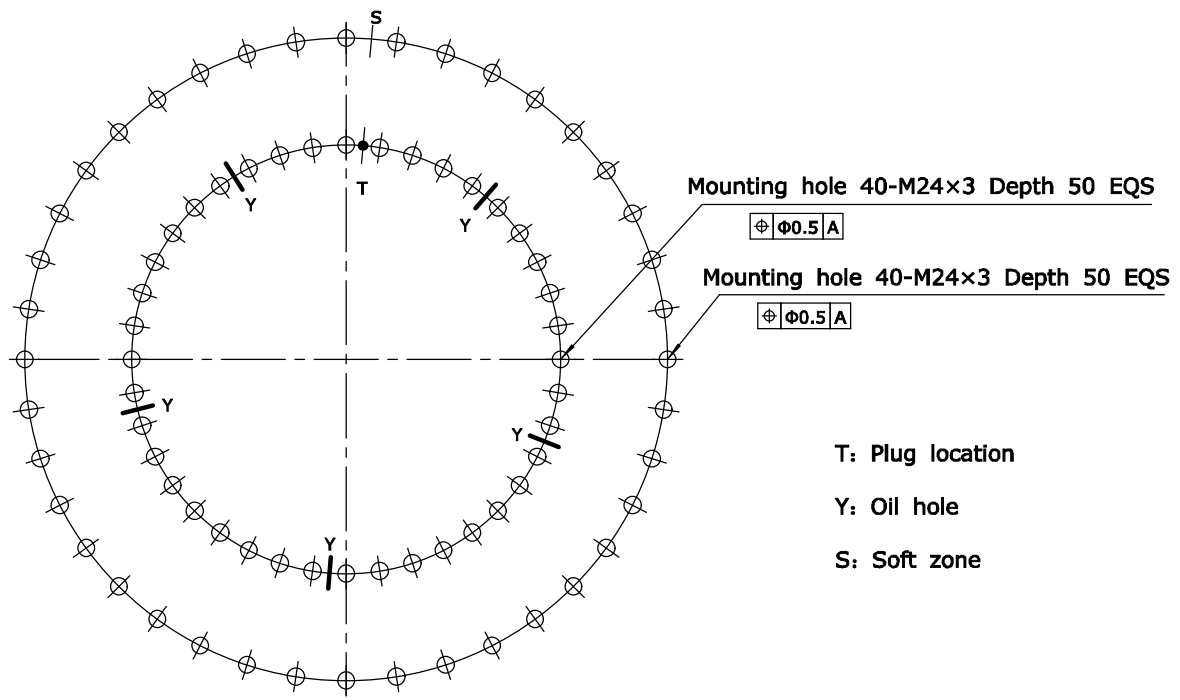
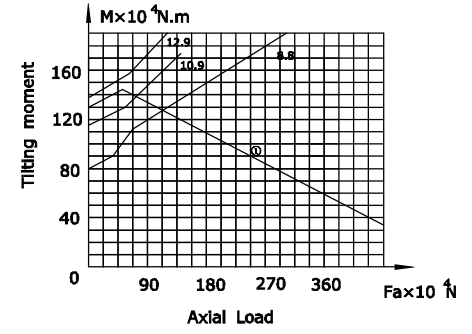


Module	m	12
Teeth no.	z	118
Teeth pressure angle	α	20°
Modification coefficients	x	+0.5
Reduction coefficients	km	1.2
Precision(GB10095-88)		10
Average base tangent length and deviation	W	537.61 ^{-0.50} _{-0.70}
Spanned tooth count.	k	15
Base tangent length change tolerances	FW	0.16

- Notes:
- Threaded hole chamfer 3.5x45° U.O.N
Unspecified chamfer 2.0x45°
Edges chamfer
 - Raceway of inner & outer ring induction hardened. hardness: 55~62HRC
Depth: ≥3.5mm
 - Inner & outer ring quenched & tempered, hardness: 207~262HB
 - Axial clearance: 0.08~0.45mm
Radial clearance: 0.08~0.45mm
- Load curve



08	HG/T2811	Seals	NBRI-3	W17	2	
07	GB117-76	Pin	CN45	$\Phi 12 \times 95$	1	
06		Plug	CN45	$\Phi 55$	1	
05	JB/T7940.7	Oil nipple	Component	M10x1	5	
04	GB/T699	Inner ring	50Mn		1	
03	GB/T308-88	Ball	GCr15	44.45	75±1	
02	HG/T2349	Spacer	Nylon	D45	75±1	
01	GB/T699	Outer ring	50Mn		1	
No.	Standard	Component	Material	Model	Qty	Remark
			Model	CTRO-1449	Drawing	Weight 420KG
			Name	011.45.1250F	Qty	
			Material	50Mn	Total 1 page	the 1st page
Design	DQ	Standard	HAN JUNG ROBOT & BEARING CO.,LTD			
Check						
Process		Approve				
Date	2016.11.23					